

**"Patient and Public Involvement in
research: how could these principles be
applied to the University's well-being and
sustainability agenda"**

Professor Paul Brocklehurst
BDS, FFGDP, MDPH, PhD, FDS RCS (Eng)

NWORTH
Clinical Trials Unit



PRIFYSGOL
BANGOR
UNIVERSITY

**Why is PPI in research now considered
to be so important?**

Experience versus design



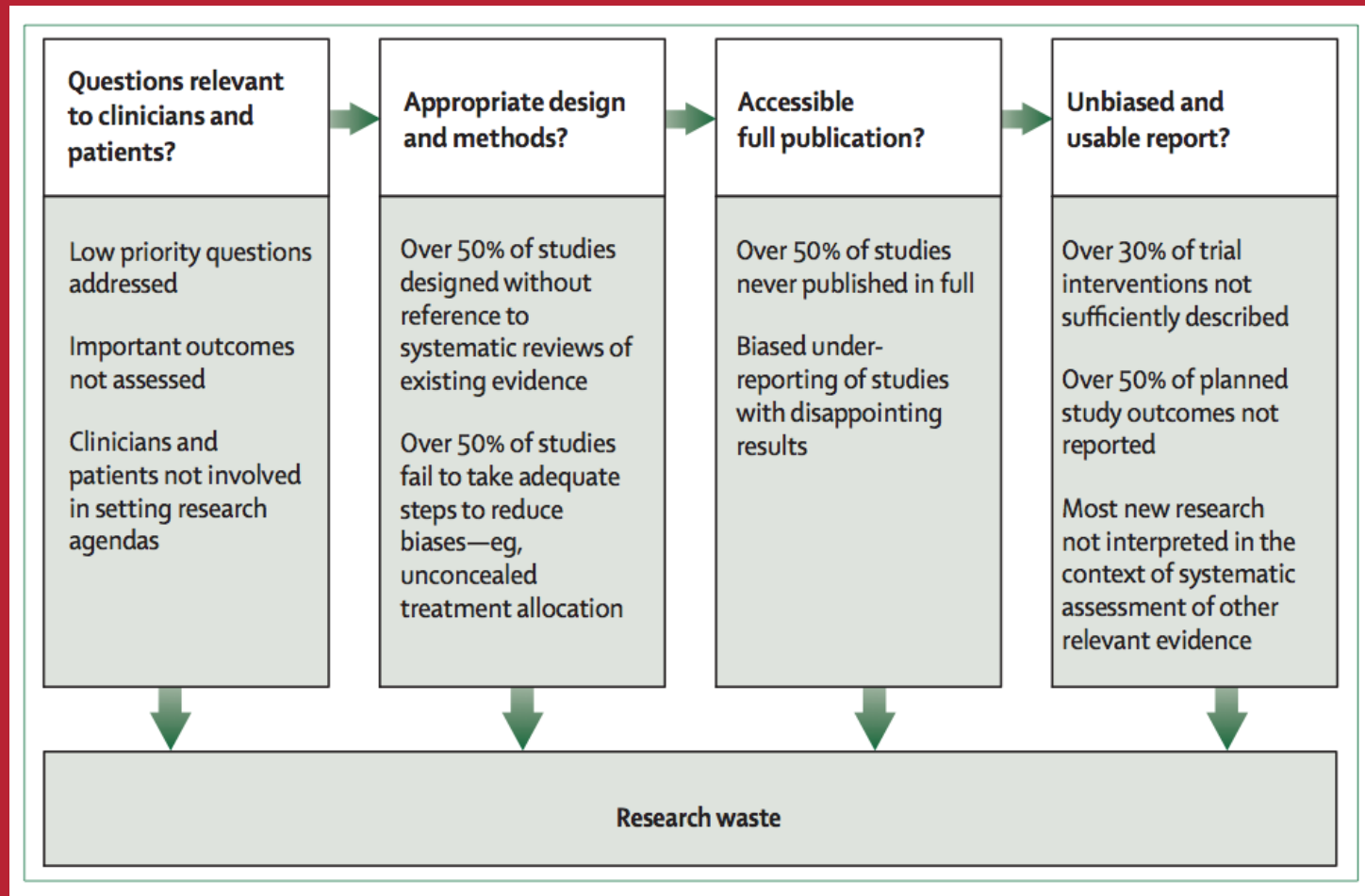
PRIFYSGOL
BANGOR
UNIVERSITY



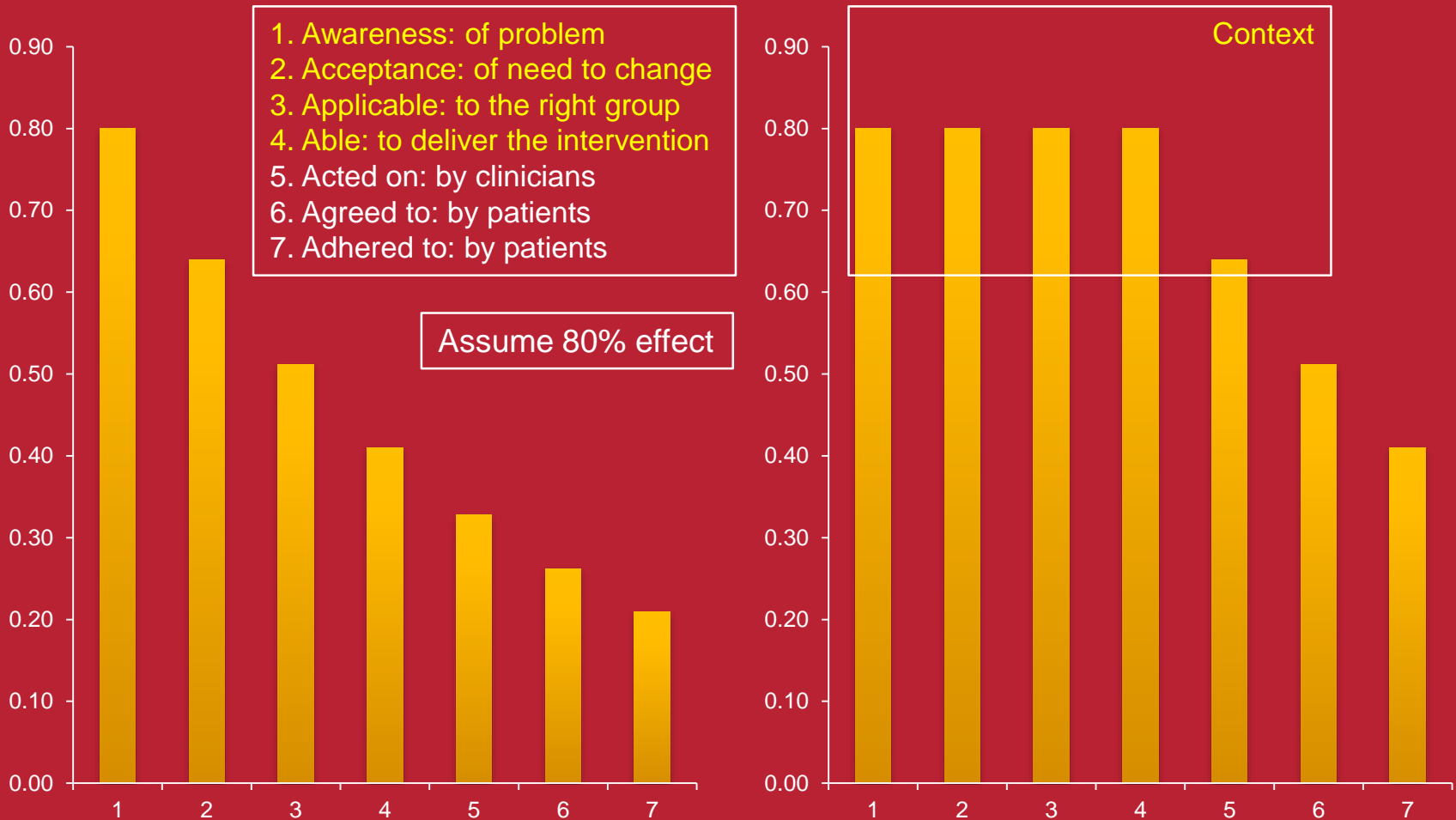
User experience

Design

Big contributor to research waste



Makes implementation difficult

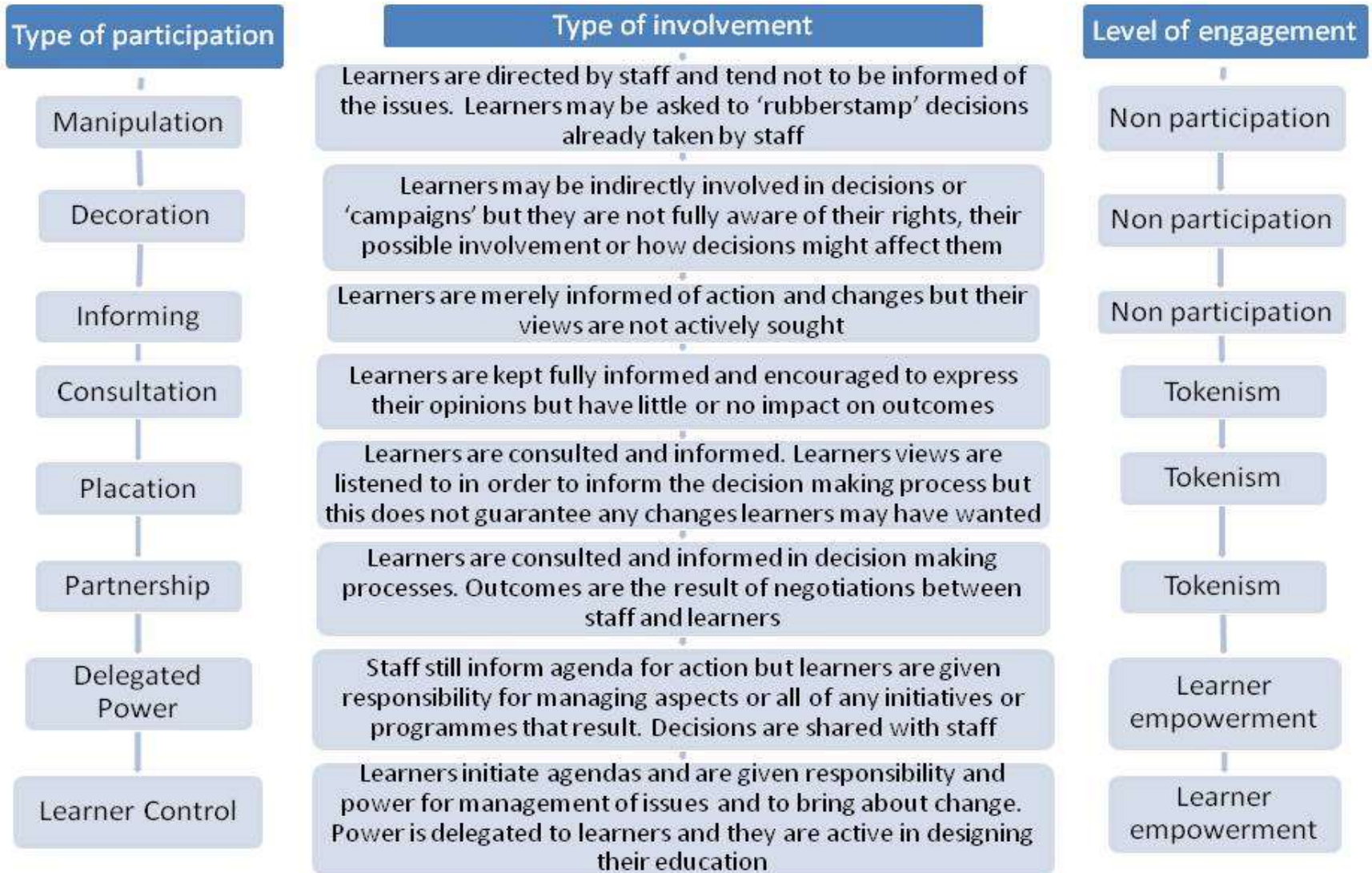


PPI as a paradigm shift

- Research carried out **with** or **by** members of the public rather than **to, about** or **for** them [INVOLVE]



'LADDER' OF PARTICIPATION

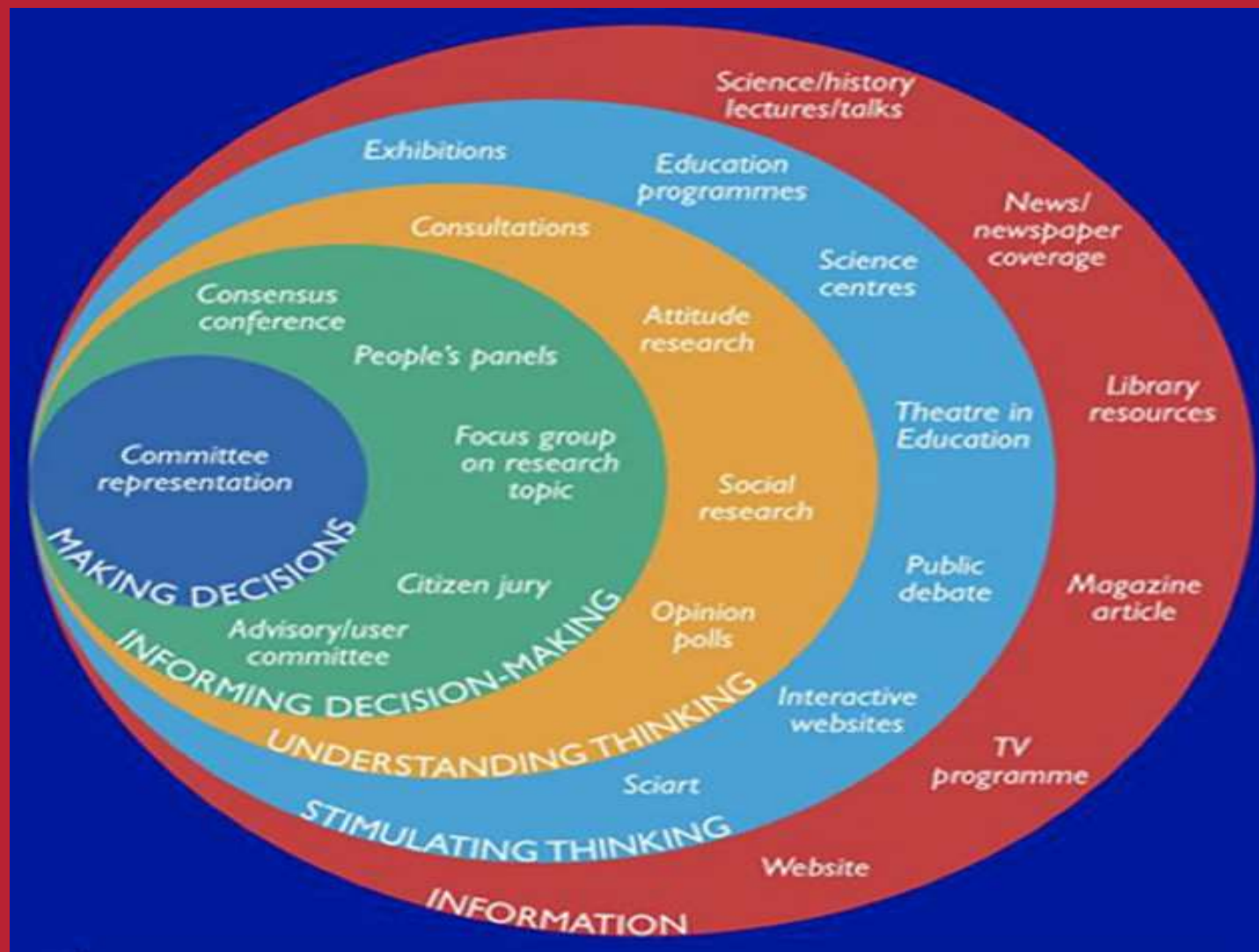


PPI as a paradigm shift



Tokenism does not change stereotypes of social systems but works to preserve them, since it dulls the revolutionary impulse.

(Mary Daly)



Dialogue

Information



Examples

<http://www.citizen scientist.org.uk/research-opportunities/dental-research/?locale=en>

STUDY UPDATES



[Research into the oral health needs of people who have had a stroke](#)

This research was carried out to better understand the oral care needs of stroke survivors, and use this to develop an intervention to improve tooth and gum health in stroke survivors after discharge from hospital. [Find out more...](#)



[Oral health for older people who are cared for at home](#)

This programme of research worked with carers and older people to develop a model for NHS dental services for older people who are cared for at home.



[A step further - setting priorities for the dental care of older people](#)

A step further Researchers at The University of Manchester and Salford Royal NHS Foundation Trust ran a Priority Setting Partnership (PSP) to understand the views of older people towards their oral health and empowered them to prioritise the research agenda for academics working in the field.



[Patient and public involvement dentistry for older people.](#)

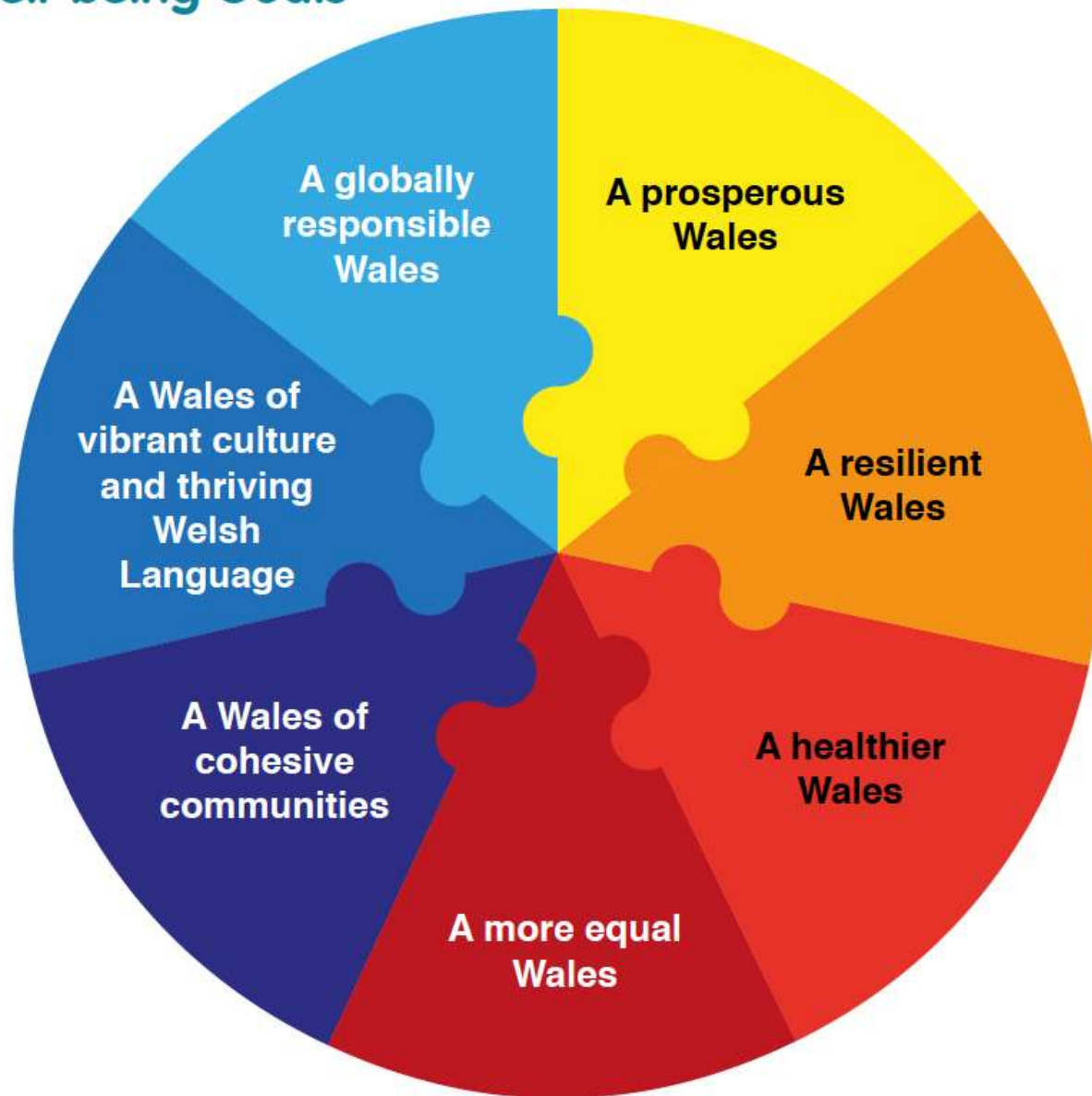
This research involved people in helping shape future services for older people who are losing their ability to care for their own oral health.

▶ [Prevention of dental disease in older people in dependent settings](#)

The number of older people who will need help to look after their own teeth is going to increase. This is particularly important for those who will live in nursing or residential care, as poor oral health can have a negative impact on their day to day lives.



Well-being Goals



PRIFYSGOL
BANGOR
UNIVERSITY

Goal	Description of the goal
A prosperous Wales	An innovative, productive and low carbon society which recognises the limits of the global environment and therefore uses resources efficiently and proportionately (including acting on climate change); and which develops a skilled and well-educated population in an economy which generates wealth and provides employment opportunities, allowing people to take advantage of the wealth generated through securing decent work.
A resilient Wales	A nation which maintains and enhances a biodiverse natural environment with healthy functioning ecosystems that support social, economic and ecological resilience and the capacity to adapt to change (for example climate change).
A healthier Wales	A society in which people's physical and mental well-being is maximised and in which choices and behaviours that benefit future health are understood.
A more equal Wales	A society that enables people to fulfil their potential no matter what their background or circumstances (including their socio economic background and circumstances).
A Wales of cohesive communities	Attractive, viable, safe and well-connected communities.
A Wales of vibrant culture and thriving Welsh language	A society that promotes and protects culture, heritage and the Welsh language, and which encourages people to participate in the arts, and sports and recreation.
A globally responsible Wales	A nation which, when doing anything to improve the economic, social, environmental and cultural well-being of Wales, takes account of whether doing such a thing may make a positive contribution to global well-being.



PAM LUCKOCK

N. WALES 1st CO PRODUCTION 'MEET UP' 15 JULY 2013

WHAT IS CO-PRODUCTION?



I BECAME INTERESTED IN CO-PRODUCTION

2007

MET EDGAR CAHN

SPARKED INTEREST

LINKED

★ RESILIENCE

"5 WAYS TO WELL BEING" (NEF REPORT)



- MOVE TO VALUES-BASED
- ASSETS-BASED
- RECIPROCITY
- RESPECT
- URGENCY

WORK WITH...

- ★ 'PEOPLE' HAVE TO HAVE A VOICE
- ★ INCLUSIVE, SELF-EMPOWERED COMMUNITIES

THANK YOU FOR COMING TO 1st MEET UP 42 PEOPLE!



"I believe we can change the world if we start working together"

DO MORE, BETTER AND FASTER!



NEED TO THINK DIFFERENTLY!
* @ ! ? * @ ! ? *

CO-PRODUCTION

★ WE HAVE ALL THE ANSWERS WE ARE THE PEOPLE WE HAVE BEEN WAITING FOR.

PERSON CENTRED

AND IT'S POWER TO CHANGE



Challenge

"Co designing solutions with people requires that we become uncertain and vulnerable"

BUDGET CUTS

20% CUTS FROM APRIL '14



★ BARRIER?

KEY = ALLOWING YOURSELF TO BECOME UNCERTAIN & VULNERABLE





PRIFYSGOL
BANGOR
UNIVERSITY

**Diolch yn fawr iawn
i chi am gwrand**